

# ROLLER CONVEYORS

## RM 8330

Merge  
Powered



24V

48V

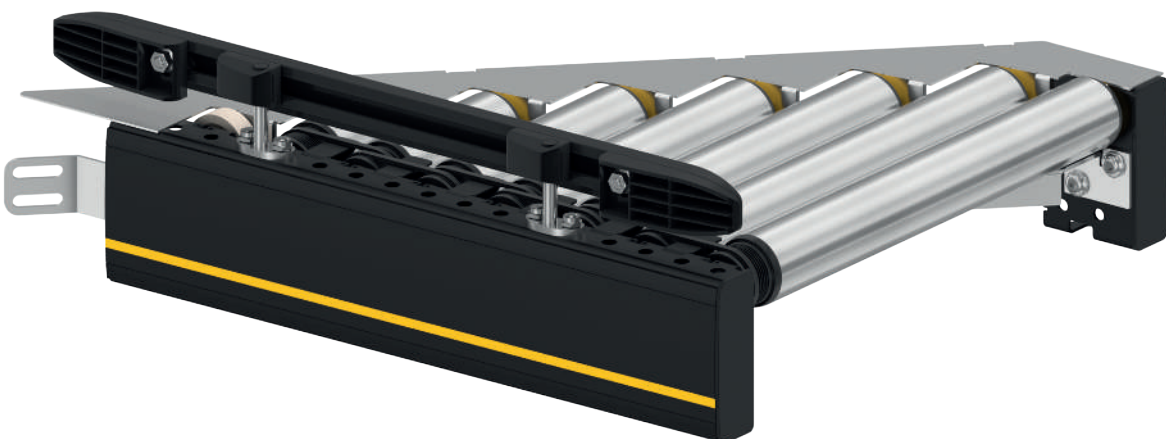
400V

### Product description

The merge merges two conveyor lines by placing products in the gaps in the flow of material. Alternatively, the merge diverts products from a straight conveyor, e.g., by using an HPD (High Performance Divert).

### Scope of delivery

- Supply incl. 1 sensor per conveyor/zone
- Supply incl. bus (communication) cable
- Supply without bus (communication) cable
- Module is completely assembled and prewired
- Please order supports and end caps separately



### Technical data

General technical data	
Max. load capacity*	50 kg/m
Conveyor speed*	0.1 to 1.0 m/s (up to 50 kg) 1.01 to 1.39 m/s (at 35 kg, 48 V, 50 W, BI, max. 10 starts/stops per minute and minimum conveying good length of 450 mm)
Max. electrical power per zone	50 W
Incline/decline	Not suitable
Ambient temperature	0 to +40 °C normal range -30 to 0 °C deep freeze area
Roller	
Roller type	Interroll Series 3500
Roller diameter	50 mm
Roller material	Steel 1.5 mm, zinc-plated
Drive	
Rated voltage	24/48 V
Motor type	Interroll RollerDrive EC5000
Drive medium	PolyVee belts
Torque transmission	Roller-to-Roller
Control	MultiControl

\*The combination of maximum values is not always possible.

# ROLLER CONVEYORS

## RM 8330

Merge  
Powered

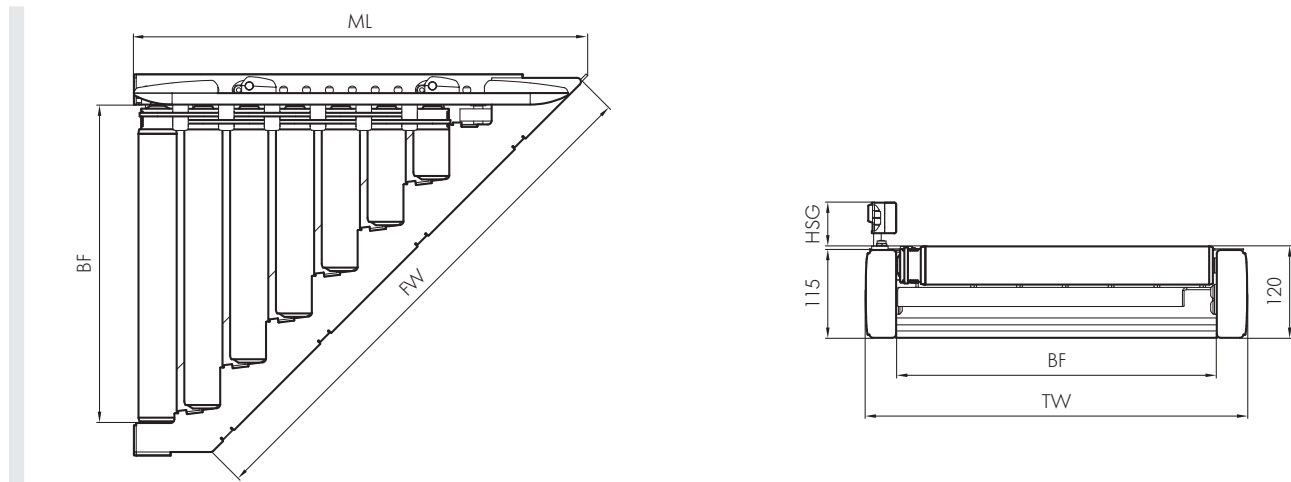


24V

48V

400V

### Dimensions



BF	Rated width	420, 620, 840 mm (others on request)
LW	Lane width	BF (+120/-90 mm per side with flexible side guide)
ML	Module length	See application notes page 122
TW	Module width	BF + 80 mm
FW	Opening width	See application notes page 122
$\alpha$	Angle	30°/45°
P	Roller pitch	60 mm
HSG	Side guide height	35 – 65 mm