

KEY PRODUCTS

TRANSFER RM 8731



24V

48V

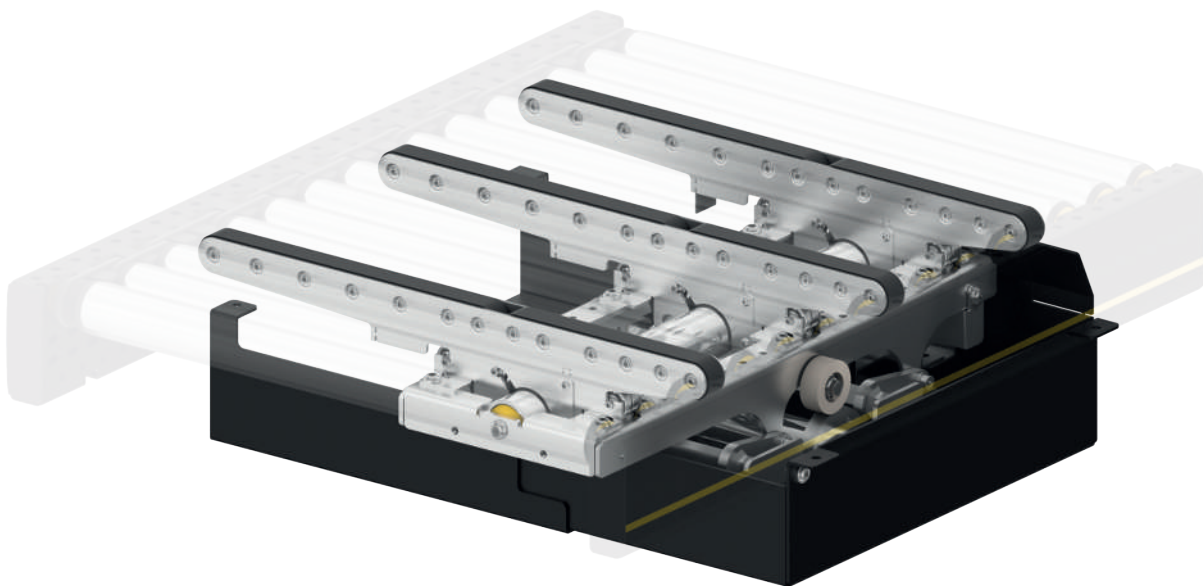
400V

Product description

The 24/48-V transfer is used for diverting or merging suitable conveying goods onto a roller track at a 90° angle. In the process, the unit load changes direction and orientation, i.e. the side of the product becomes the leading edge or that orientation is reversed.

Scope of delivery

- When used in zone conveyor, supply incl. sensor kit and cable set
- Supply incl. fastening set, side guide kit and control card
- Supply without roller conveyor

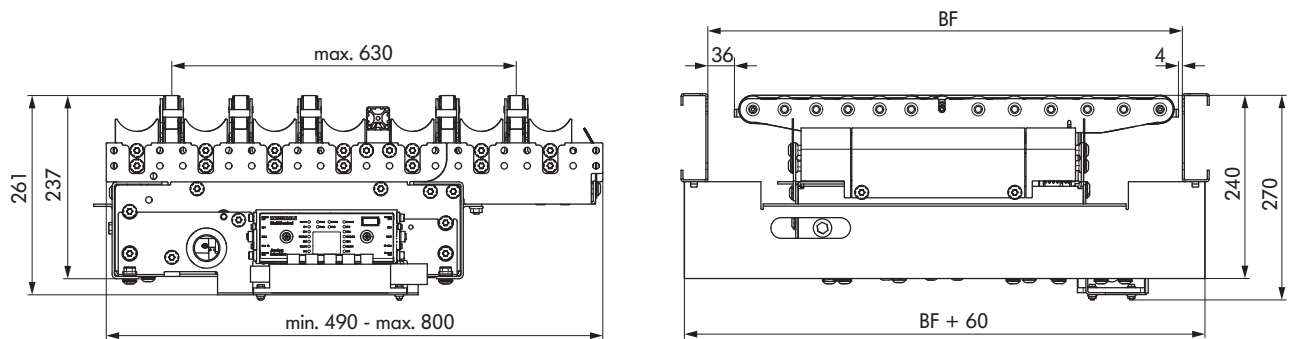


Technical data

General technical data	
Max. load capacity*	50 kg (standard) 25 kg (chill)
Belt speed	1.0 m/s
Lifting time	0.3 s
Incline/decline	Not suitable
Ambient temperature	+5 to +40 °C
Stroke and belt drive	
Rated voltage	24 V/48 V (drive motor and lift motor)
Control	MultiControl

*The combination of maximum values is not always possible.

Dimensions



BF	Rated width	420, 620, 840 mm (others on request)
C1 to C5	Blade distance	Flexible distances in multiples of 60 mm or 90 mm
	Number of blades	Max. 5